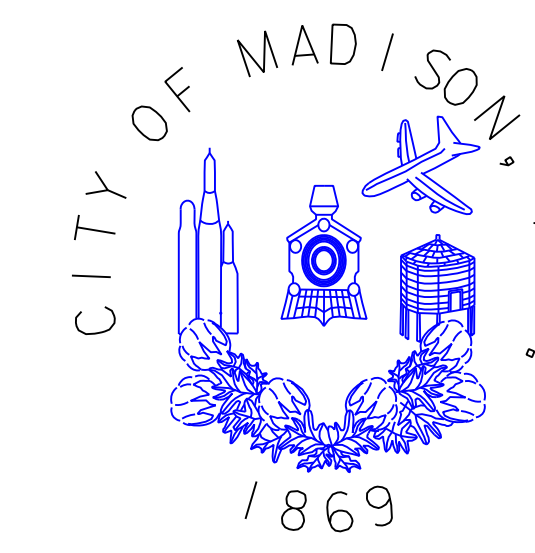


GREENWAY & TRAILS MAP



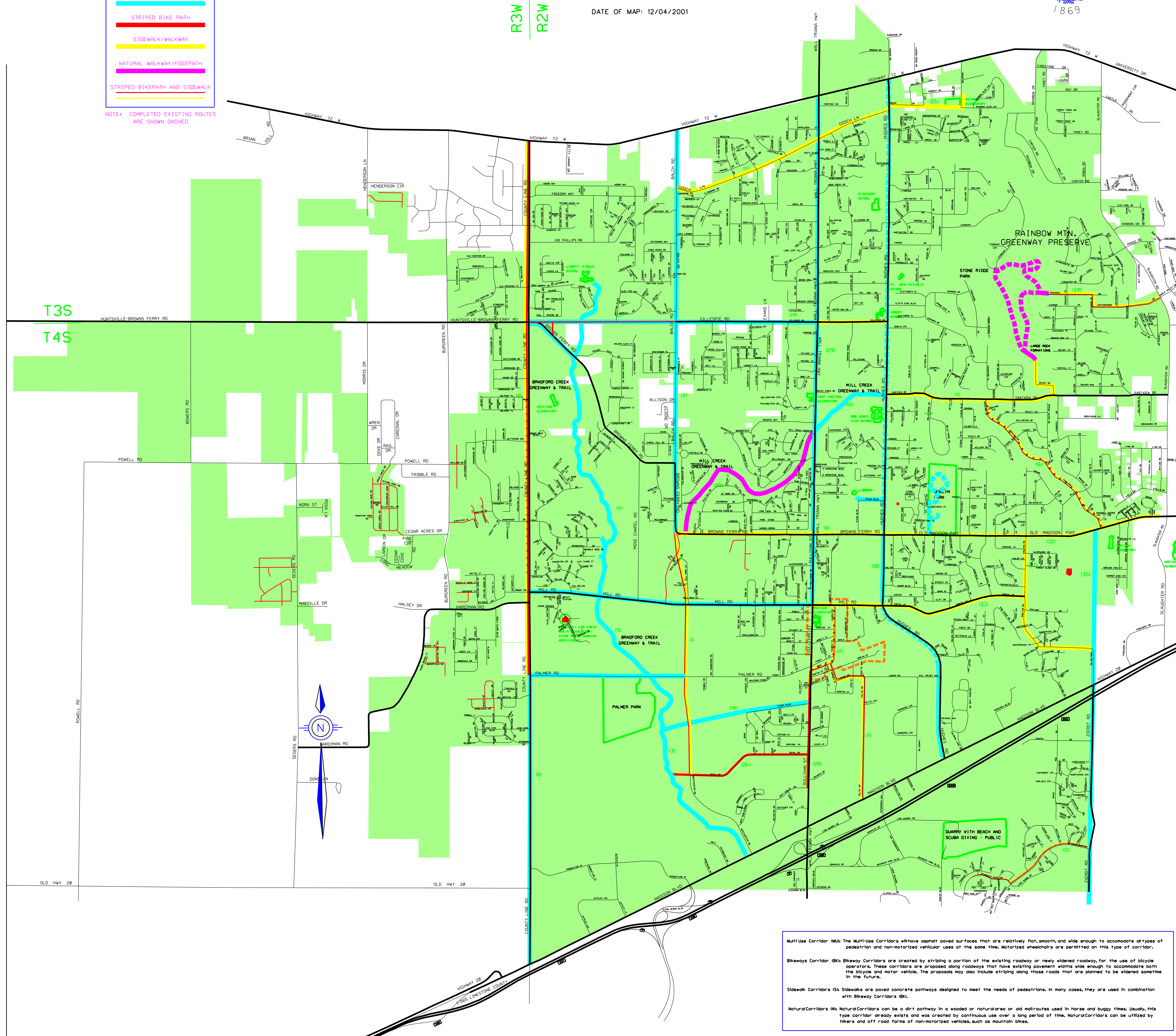
DATE OF MAP: 12/04/2001

R3W
R2W

LEGEND

- STREET NAME
- CITY LIMIT BOUNDARY
- HISTORICAL DISTRICT BOUNDARY
- MULTI-USE CORRIDORE
- STRIPED BIKE PATH
- SIDEWALK/WALKWAY
- NATURAL WALKWAY/FOOTPATH
- STRIPED BIKEPATH AND SIDEWALK

NOTE: COMPLETED EXISTING ROUTES ARE SHOWN DASHED



Multi-Use Corridor (M) The Multi-Use Corridors are paved surfaces that are relatively flat, smooth, and wide enough to accommodate all types of pedestrian and non-motorized vehicular uses at the same time. Motorized wheelchairs are permitted on this type of corridor.

Bikeway Corridor (B) Bikeway Corridors are created by striping a portion of the existing roadway or newly widened roadway, for the use of bicycle operators. These corridors are proposed along roadways that have existing pavement widths wide enough to accommodate both the bicycle and motor vehicle. The proposals may also include striping along those roads that are planned to be widened sometime in the future.

Sidewalk Corridors (S) Sidewalks are paved concrete pathways designed to meet the needs of pedestrians. In many cases, they are used in combination with Bikeway Corridors (B).

Natural Corridors (N) Natural Corridors can be a dirt pathway in a wooded or natural area or old routes used in horse and buggy times. Usually, this type corridor already exists and was created by continuous use over a long period of time. Natural Corridors can be utilized by hikers and off road forms of non-motorized vehicles, such as mountain bikes.